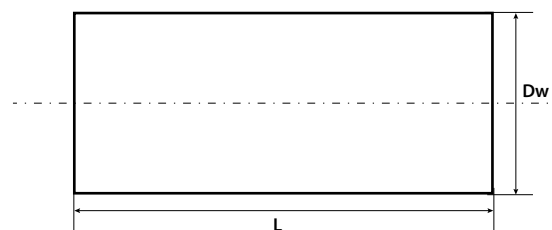


8.1.15 Sliding sleeve MP



JACKET PIPE external diameter Dz: [mm]	Sliding sleeve MP internal diameter Dw: [mm]	Sliding sleeve MP wall thickness s: [mm]	Sliding sleeve MP length L: [mm]	CATALOGUE No.
63	69	3,0 ^{+0,5}	600/700	MP-063L600/..L700
75	84	3,0 ^{+0,5}	600/700	MP-075L600/..L700
90	96	3,0 ^{+0,5}	600/700	MP-090L600/..L700
110	115	3,0 ^{+1,0}	600/700	MP-110L600/..L700
125	131	3,0 ^{+1,0}	600/700	MP-125L600/..L700
140	147	3,0 ^{+1,0}	600/700	MP-140L600/..L700
160	169	3,0 ^{+1,0}	600/700	MP-160L600/..L700
180	189	3,0 ^{+1,0}	600/700	MP-180L600/..L700
200	209	3,2 ^{+1,3}	600/700	MP-200L600/..L700
225	235	3,4 ^{+1,3}	600/700	MP-225L600/..L700
250	262	3,6 ^{+1,3}	600/700	MP-250L600/..L700
280	290	3,9 ^{+1,3}	600/700	MP-280L600/..L700
315	328	4,1 ^{+1,5}	600/700	MP-315L600/..L700
355	366	4,5 ^{+2,0}	600/700	MP-355L600/..L700
400	413	4,8 ^{+2,2}	600/700	MP-400L600/..L700
450	464	5,2 ^{+2,5}	600/700	MP-450L600/..L700
500	509	5,6 ^{+2,5}	600/700	MP-500L600/..L700
520	540	8,6 ^{+2,5}	600/700	MP-520L600/..L700

* Length tolerance : +/- 1,0 mm

** Other lengths and diameters of sliding sleeves available on request

The sliding sleeves MP are to be used as:

- Regular joints to be used together with two heat-shrinkable, cross-linked collars (TPSM-PE), or with two UNI-sleeves
- Repair joints, that once cut longitudinally can be welded again by an extruder, together with heat-shrinkable cross-linked tape RJS-E or with two UNI-sleeves
- Atypical joints, that can be freely cut and drilled for welding plugs, in any spot desired

MP sleeves shall be stored and transported in upright position to avoid ovalization. Maximal temperature during storage and transport must not exceed 35°C.

On customer's demand MP sleeves could be wrapped in white LDPE foil (MP+F)