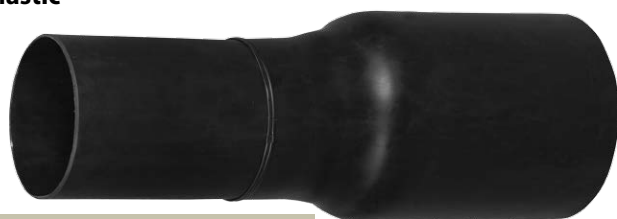
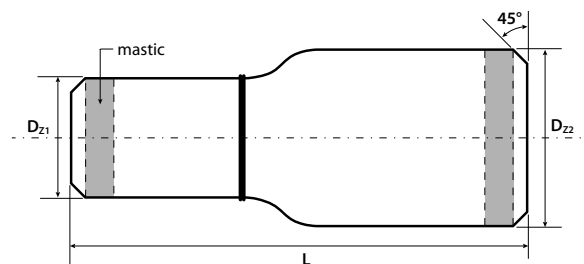


8.4 Heat-shrinkable reducers.

8.4.1 Heat-shrinkable reducers **MTMr (straight shaped)** i **MTMrw bottle shaped (with welding)** with pre-applied mastic



MTMrw bottle shaped (with welding)



REDUCER Ext. diam. Dz1 / ext. diameter Dz2 [mm]	Length L: [mm]	CATALOGUE No.
90 / 110*	700	MTMr-090/110L700W
90 / 125	700	MTMrw-090/125L700W
90 / 140	700	MTMrw-090/140L700W
110 / 125*	700	MTMr-110/125L700W
110 / 140	700	MTMrw-110/140L700W
110 / 160	700	MTMrw-110/160L700W
125 / 140*	700	MTMr-125/140L700W
125 / 160	700	MTMrw-125/160L700W
125 / 180	700	MTMrw-125/180L700W
140 / 160*	700	MTMr-140/160L700W
140 / 180	700	MTMrw-140/180L700W
140 / 200	700	MTMrw-140/200L700W
160 / 180*	700	MTMr-160/180L700W
160 / 200	700	MTMrw-160/200L700W
160 / 225	700	MTMrw-160/225L700W
180 / 200*	700	MTMr-180/200L700W
180 / 225	700	MTMrw-180/225L700W
180 / 250	700	MTMrw-180/250L700W
200 / 225*	700	MTMr-200/225L700W
200 / 250	700	MTMrw-200/250L700W
200 / 280	700	MTMrw-200/280L700W
225 / 250*	700	MTMr-225/250L700W
225 / 280	700	MTMrw-225/280L700W
225 / 315	700	MTMrw-225/315L700W
250 / 280*	700	MTMr-250/280L700W
250 / 315	700	MTMrw-250/315L700W
250 / 355	700	MTMrw-250/355L700W
280 / 315*	700	MTMr-280/315L700W
280 / 355	700	MTMrw-280/355L700W
280 / 400	700	MTMrw-280/400L700W
315 / 355*	700	MTMr-315/355L700W
315 / 400	700	MTMrw-315/400L700W
315 / 450	700	MTMrw-315/450L700W
355 / 400*	700	MTMr-355/400L700W
355 / 450	700	MTMrw-355/450L700W
355 / 500	700	MTMrw-355/500L700W
400 / 450*	700	MTMr-400/450L700W
400 / 500	700	MTMrw-400/500L700W
400 / 560	700	MTMrw-400/560L700W
450 / 500*	700	MTMr-450/500L700W
450 / 560	700	MTMrw-450/560L700W
450 / 630	700	MTMrw-450/630L700W
500 / 560*	700	MTMr-500/560L700W
560 / 630*	700	MTMr-500/630L700W
630 / 710*	700	MTMr-630/710L700W

* **MTMr reducers covering two adjacent diameters are straight shaped**

****Other diameters available upon request**

Set of MTMr or MTMrw reducer consists of:

- heat-shrinkable reducer with pre-applied mastic
- ventilation plugs – 2 pcs
- welding plugs – 2 pcs



Reducers are wrapped in white LDPE foil and should be stored and transported in upright position. Maximal temperature during storage and transport must not exceed 35°C.

Additional accessories: during assembly of reducers components of polyurethane foam (PUR) are to be used. When ordering please provide information if the reducers are to be delivered together with PUR foam.